

New state record and distribution map of *Rhinella cerradensis* (Anura, Bufonidae) in the Cerrado biome, Brazil

Diego José Santana^{1*}, Renato Gaiga², Luis Fernando Storti³, Tiago Gomes dos Santos⁴, Marianna Dixo⁵

Abstract. We provide new data on the distribution of *Rhinella cerradensis*, a medium to large sized toad with a wide distribution in the Cerrado biome. We found *Rhinella cerradensis* in state of Mato Grosso west-central Brazil, and present an updated distribution map of this species as well as a discussion of its current range.

Keywords. *Rhinella cerradensis*, Cerrado, Bufonidae, Mato Grosso, distribution.

The *Rhinella marina* species group is composed of 10 toad species (*Rhinella achavali*, *R. arenarum*, *R. cerradensis*, *R. ictericus*, *R. jimi*, *R. marina*, *R. poeppigii*, *R. rubescens*, *R. schneideri*, and *R. veredas*) occurring in Brazil with exception of *R. poeppigii* known from Bolivia, Ecuador and Peru (Maciel et al., 2007; Frost, 2009). Described recently, *R. cerradensis* Maciel, Brandão, Campos & Sebben, 2007 (Fig. 1) is a medium to large sized species with a wide distribution in the *Cerrado* biome, in Brazilian states of Piauí, Bahia, Goiás, Minas Gerais, Mato Grosso do Sul, and in Distrito Federal (Maciel et al., 2007; Maciel, 2009). It is characterized by its medium to large body size, absence of tibial glands, well developed cranial crests, short hands, sexually dimorphic coloration and absence of a

spiracle tube in the tadpole (Maciel et al., 2007).

On 24 August 2009, during a fieldwork at municipality of Itiquira, state of Mato Grosso, west-central Brazil, we found at ca. 19:30 h, after a heavy rainfall, a couple of *R. cerradensis* in amplexus (Fig. 2) at the margin of a temporary pond in a *Cerrado* physiognomy (lat -17.213236; lon -54.015342, 640 m above sea level), like observed data of Maciel et al. (2007), which mentioned that adults were always found in open *Cerrado* physiognomies (*Cerrado* and *Campo Sujo*; see Ribeiro & Walter 2001 for an account of the *Cerrado* physiognomies). Males of *Eupemphix nattereri*, *Rhinella mirandaribeiroi*, *Rhinella schneideri*, and *Scinax fuscovarius* were recorded calling in the same pond.

-
- 1 Universidade Federal de Viçosa, Departamento de Biologia Animal. Avenida Peter Henry Rolfs s/n. CEP. 36571-000. Viçosa, MG, Brazil; e-mail: santana_herpeto@yahoo.com.br
 - 2 Universidade Federal de Alfenas, Laboratório de Ecologia de fragmentos. Rua Gabriel Monteiro da Silva 700, Centro. CEP 37130-000. Alfenas, MG, Brazil;
 - 3 Universidade Estadual do Norte do Paraná, Departamento de Biologia. Rodovia BR-369 Km 54 CP 261. CEP 86360-000. Bandeirantes, PR, Brazil;
 - 4 Universidade Federal de Santa Maria, Laboratório de Herpetologia. Avenida Roraima s/n., Bairro Camobi. CEP 97105-900. Santa Maria, RS, Brazil.
 - 5 Hiléia Consultoria Ambiental Ltda. Rua Peucaia, 291 cj 21B. CEP 05578-070, Butantã, São Paulo, SP, Brazil.

* corresponding author



Figure 1. *Rhinella cerradensis* (MZUSP 142012, male) from municipality of Itiquira, state of Mato Grosso, Brazil. Photo by D. J. Santana.



Figure 2. *Rhinella cerradensis* couple in amplexus from municipality of Itiquira, state of Mato Grosso, Brazil. Photo by T. G. dos Santos.

The present note provides the first record for *Rhinella cerradensis* in the state of Mato Grosso, Brazil, extending its known distribution ca. 100 km northwest from municipality of Mineiros, state of Goiás (Maciel *et al.*, 2007) (Fig. 3).

Voucher specimens were housed in the herpetological collection of the *Museu de Zoologia, Universidade de São Paulo* (MZUSP), municipality of São Paulo, state of São Paulo, Brazil (MZUSP 142011-142012).

According to its description, *R. cerradensis* also occurs in the state of Minas Gerais, Brazil (Maciel *et al.*, 2007). However, there are no voucher specimens for any locality in Minas Gerais (Maciel *et al.*, 2007). One of the authors who described the species confirmed that there was a mistake at the time of description of *R. cerradensis* and that actually there is no current species record from Minas Gerais (N.M. Maciel, pers. comm).

Rhinella cerradensis is considered as a rare species in areas where it was recorded (Maciel *et al.*, 2007). Its conservation status is reported as Data Deficient, since very little information on its ecological requirements is known (Maciel, 2008). The present record provides an important contribution to the knowledge of geographic distribution of *Rhinella cerradensis*.

Acknowledgements. We thank Dr. Natal M. Maciel (UFG) for confirming the specimens identity and personal comments, Henrique C. Costa for critical reading of the manuscript and an anonymous reviewer valuable revision, Hussam Zaher, Ricardo A. Guerra-Fuerntes and Carolina Castro-Mello for receiving the material at *Museu de Zoologia da Universidade de São Paulo* (MZUSP), *Instituto Brasileiro do Meio Ambiente e dos Recursos Naturais Renováveis* (IBAMA) for collection permit # 133/2009 CGFAP, and *Arcadis Tetraplan S.A.* for financial support.

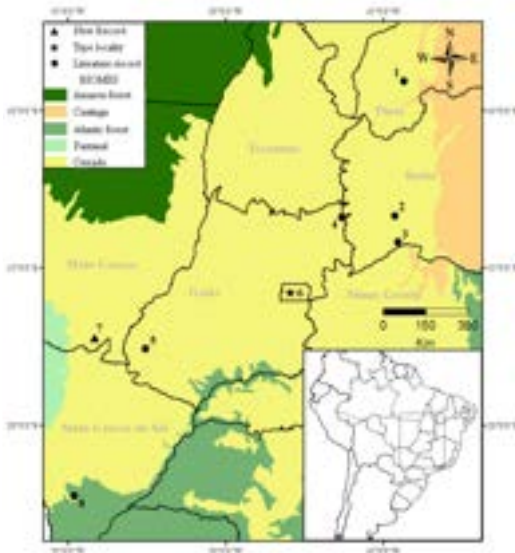


Figure 3. Geographic distribution map of *Rhinella cerradensis*: state of Piauí: (1) Uruçui-Una (lat -9.070549; lon -44.357266); state of Bahia: (2) Cocos (lat -12.722220; lon -44.564579), (3) Correntina (lat -13.340368; lon -44.643030); state of Goiás: (4) São Domingos (lat -13.394660; lon -46.326475), (5) Mineiros (lat -17.578652; lon -52.542390); Federal district: (6) Brasília (type locality) (lat -15.780148; lon -47.929170); state of Mato Grosso: (7) Itiquira (new record) (lat -17.213236; lon -54.015342); state of Mato Grosso do Sul: (8) Dourados (lat -22.221816; lon -54.806415). Coordinates are given of the municipalities.

References

- Frost, D.R. (2009): Amphibian Species of the World: An online reference. Version 5.3. Electronic database accessible at <http://research.amnh.org/herpetology/amphibia/index.php>. American Museum of Natural History, New York, USA. Captured on 12 September 2009.
- Maciel, N.M. (2008): *Rhinella cerradensis*. In IUCN 2009 (org.). IUCN Red List of Threatened Species. Version 2009.1. Electronic database accessible at <http://www.iucnredlist.org>. Captured on 12 September 2009.
- Maciel, N.M., Brandão, R.A., Campos, L.A., Sebben, A. (2007): A Large New Species of *Rhinella* (Anura: Bufonidae) from Cerrado of Brazil. *Zootaxa* **1627**: 23-39.
- Ribeiro, J.F., Walter, B.M.T. (2001): Fitofisionomias do bioma Cerrado. In: Cerrado: Ambiente e Flora, p. 87-166. Sano, S.M., Almeida, S.P., Ed., Brasília, Embrapa.